

# YOUR SOURCE FOR SUPERIOR GENETICS SINCE 1944.



Homozygous Polled



CED	+13.5	SC	+1.7
BW	-0.5	REA	+0.77
WW	+72	Marb	+0.43
YW	+121	BMI	+\$429
Milk	+72	BII	+\$536
Udr	+1.30	CHB	+\$151
Teat	+1.20		

## BEHM 100W CUDA 504C

KCF BENNETT 3008 M326  
 NJW 735 M326 TRUST 100W ET  
 NJW P606 72N DAYDREAM 735  
 KCF BENNETT 9126J R294  
 BEHM R294 JASMAN102Y  
 CPH MS WRANGLER 1W

Owned with Behm Herefords and Select Sires



Homozygous Polled



CED	+3.3	SC	+1.2
BW	+2.3	REA	+0.44
WW	+71	Marb	+0.49
YW	+119	BMI	+\$427
Milk	+27	BII	+\$542
Udr	+1.50	CHB	+\$115
Teat	+1.50		

## KCF BENNETT HOMEWARD C776<sup>T</sup>

SHF WONDER M326 W18 ET  
 NJW 735 W18 HOMETOWN 10Y ET  
 NJW P606 72N DAYDREAM 735  
 SCHU-LAR ON TARGET 225  
 KCF MISS 22S Z301 ET  
 KCF MISS REVOLUTION X338 ET

Owned with W&A Herefords, Mead Cattle and Candy Meadow Farms



Homozygous Polled



CED	+11.1	SC	+1.7
BW	+1.8	REA	+0.72
WW	+68	Marb	+0.42
YW	+94	BMI	+\$422
Milk	+25	BII	+\$528
Udr	+1.60	CHB	+\$106
Teat	+1.50		

## KCF BENNETT PROVIDENT B284

SCHU-LAR ON TARGET 225  
 HYALITE ON TARGET 936  
 HYALITE TS LASS 310  
 MSU TCF REVOLUTION 4R  
 KCF MISS REVOLUTION Z280 ET  
 KCF MISS PROFICIENT U201

Owned with Drummond Sparks Beef



Homozygous Polled



CED	+13.2	SC	+1.8
BW	+0.5	REA	+0.83
WW	+76	Marb	+0.21
YW	+121	BMI	+\$394
Milk	+37	BII	+\$493
Udr	+1.50	CHB	+\$124
Teat	+1.50		

## R LANDMARK 4386

SCHU-LAR ON TARGET 225  
 HYALITE ON TARGET 936  
 HYALITE TS LASS 310  
 R REVOLUTION 4510  
 R MISS REVOLUTION 3032  
 R MISS PUCKSTER 678

Owned with Rausch Herefords



CED	+13.4	SC	+1.8
BW	-0.3	REA	+0.40
WW	+58	Marb	+0.41
YW	+91	BMI	+\$428
Milk	+36	BII	+\$526
Udr	+1.60	CHB	+\$97
Teat	+1.70		

## KCF BENNETT DEVOUT B716

UPS DOMINO 3027  
 CHURCHILL SENSATION 028X  
 CHURCHILL LADY 7202T ET  
 EFBEEF SCHU-LAR PROFICIENT N093  
 KCF MISS PROFICIENT U201  
 KCF MISS 774 L82

Owned with Joe Waggoner



Homozygous Polled



CED	+0.1	SC	+1.0
BW	+4.4	REA	+0.38
WW	+64	Marb	+0.15
YW	+106	BMI	+\$405
Milk	+62	BII	+\$491
Udr	+1.60	CHB	+\$106
Teat	+1.60		

## KCF BENNETT HOMELAND C34

SHF WONDER M326 W18 ET  
 NJW 735 W18 HOMETOWN 10Y ET  
 NJW P606 72N DAYDREAM 735  
 EFBEEF SCHU-LAR PROFICIENT N093  
 KCF MISS PROFICIENT A47  
 KCF MISS REVOLUTION Y102 ET

Owned with ST Genetics



Homozygous Polled



CED	+11.5	SC	+1.4
BW	-0.5	REA	+0.60
WW	+58	Marb	+0.44
YW	+98	BMI	+\$449
Milk	+24	BII	+\$549
Udr	+1.40	CHB	+\$117
Teat	+1.40		

## KCF BENNETT RELEVANT D67

SCHU-LAR ON TARGET 225  
 KCF BENNETT ENCORE Z311 ET  
 KCF MISS REVOLUTION X338 ET  
 UPS DOMINO 3027  
 KCF MISS 3027 Z44 ET  
 KCF MISS DURANGO X72

Owned with Birdwell Ranch



Homozygous Polled



CED	+8.6	SC	+1.4
BW	+0.8	REA	+0.54
WW	+61	Marb	+0.38
YW	+101	BMI	+\$401
Milk	+34	BII	+\$496
Udr	+1.30	CHB	+\$120
Teat	+1.20		

## KCF BENNETT BEDFORD E177

NJW 735 M326 TRUST 100W ET  
 BEHM 100W CUDA 504C  
 BEHM R294 JASMAN102Y  
 EFBEEF SCHU-LAR PROFICIENT N093  
 KCF MISS PROFICIENT Z8  
 KCF MISS FOREMOST X203

Owned with Paul and Bette Slayton

KNOLL CREST FARM



**KCF was recognized as breeder of 59 sires achieving CHB Sire of Distinction in 2020.**



**Homozygous Polled**



**KCF BENNETT TRUST B279**

KCF BENNETT 3008 M326  
 NJW 735 M326 TRUST 100W ET  
 NJW P606 72N DAYDREAM 735  
 MSU TCF REVOLUTION 4R  
 KCF MISS REVOLUTION X374  
 BBF MISS FLO U23

CED	+7.5	SC	+1.6
BW	+1.3	REA	+1.10
WW	+73	Marb	+0.38
YW	+115	BMI	+\$500
Milk	+32	BII	+\$607
Udr	+1.60	CHB	+\$163
Teat	+1.60		

Owned with Claxton Farm



**Homozygous Polled**

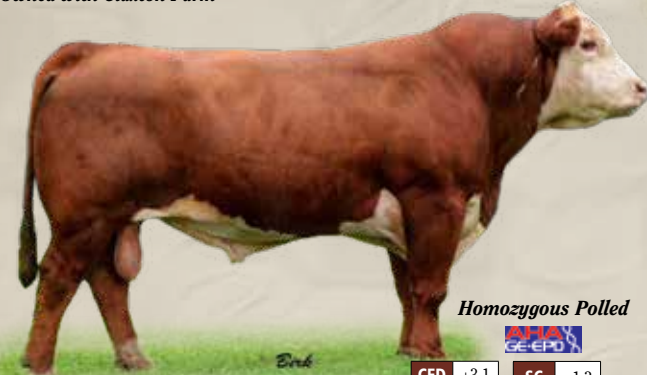


**KCF BENNETT NOBLE D367**

MSU MF HUDSON 19H  
 SHF YORK 19H Y02  
 LOEWEN MISS P20 10W  
 CHURCHILL SENSATION 028X  
 KCF MISS SENSATION B440  
 KCF MISS FOREMOST Z556

CED	+8.3	SC	+1.6
BW	+0.1	REA	+0.79
WW	+68	Marb	+0.08
YW	+111	BMI	+\$409
Milk	+27	BII	+\$493
Udr	+1.40	CHB	+\$127
Teat	+1.40		

Owned with Ochsner Herefords



**Homozygous Polled**



**KCF BENNETT REVOLUTION X51**

FELTONS LEGEND 242  
 MSU TCF REVOLUTION 4R  
 MSU TCF RACHAEL ET 54N  
 EFBEEF SCHU-LAR PROFICIENT N093  
 KCF MISS PROFICIENT U201  
 KCF MISS 774 L82

CED	+3.1	SC	+1.3
BW	+4.5	REA	+1.35
WW	+72	Marb	+0.54
YW	+115	BMI	+\$553
Milk	+15	BII	+\$670
Udr	+1.50	CHB	+\$159
Teat	+1.50		

Owned with Walker Polled Herefords



**Homozygous Polled**

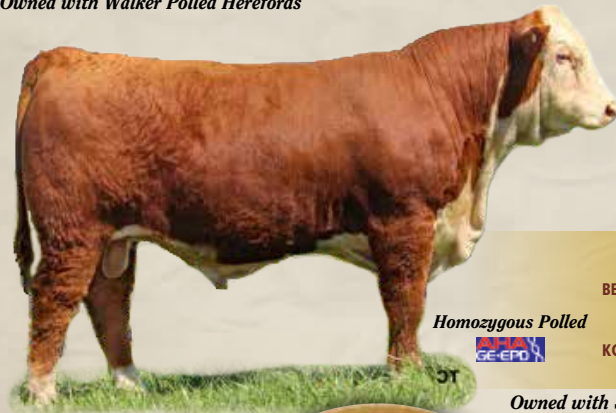


**KCF BENNETT ENCORE Z311**

SCHU-LAR 5N OF 9L 3008  
 SCHU-LAR ON TARGET 225  
 SCHU-LAR 208 OF 1H 121 ET  
 MSU TCF REVOLUTION 4R  
 KCF MISS REVOLUTION X338 ET  
 JW 718 VICTORIA 9106

CED	+0.9	SC	+1.5
BW	+3.5	REA	+0.27
WW	+77	Marb	+0.66
YW	+130	BMI	+\$455
Milk	+24	BII	+\$588
Udr	+1.20	CHB	+\$126
Teat	+1.10		

Owned with Candy Meadow Farms



**Homozygous Polled**



**KCF BENNETT 504C F33**

NJW 735 M326 TRUST 100W ET  
 BEHM 100W CUDA 504C  
 BEHM R294 JASMAN102Y  
 KCF BENNETT REVOLUTION X51  
 KCF MISS X51 Z153  
 KCF MISS PROFICIENT X46

CED	+12.6	SC	+1.7
BW	+1.8	REA	+0.76
WW	+73	Marb	+0.46
YW	+119	BMI	+\$433
Milk	+32	BII	+\$545
Udr	+1.20	CHB	+\$136
Teat	+1.20		

Owned with Sukraw Herefords

SEMEN AND PRIVATE TREATY BULL AND FEMALE SALES YEAR ROUND.

A select group of Fall-bred cows available by private treaty in July.  
 Call Paul for details.

James D. Bennett  
 (434) 376-7299  
 Paul S. Bennett  
 (434) 941-8245  
 Dalton G. Bennett  
 (434) 664-7946



Jim G. Bennett  
 (434) 664-7935  
 Brian R. Bennett  
 (434) 664-8309  
 Scott R. Bennett  
 (434) 660-7268

[WWW.KNOLLCRESTFARM.COM](http://WWW.KNOLLCRESTFARM.COM)

P.O. Box 117 • Red House, Virginia 23963  
 Martha Johnson, Office Manager  
 (434) 376-3567  
 knollcrest@knollcrestfarm.com

KNOLL CREST FARM