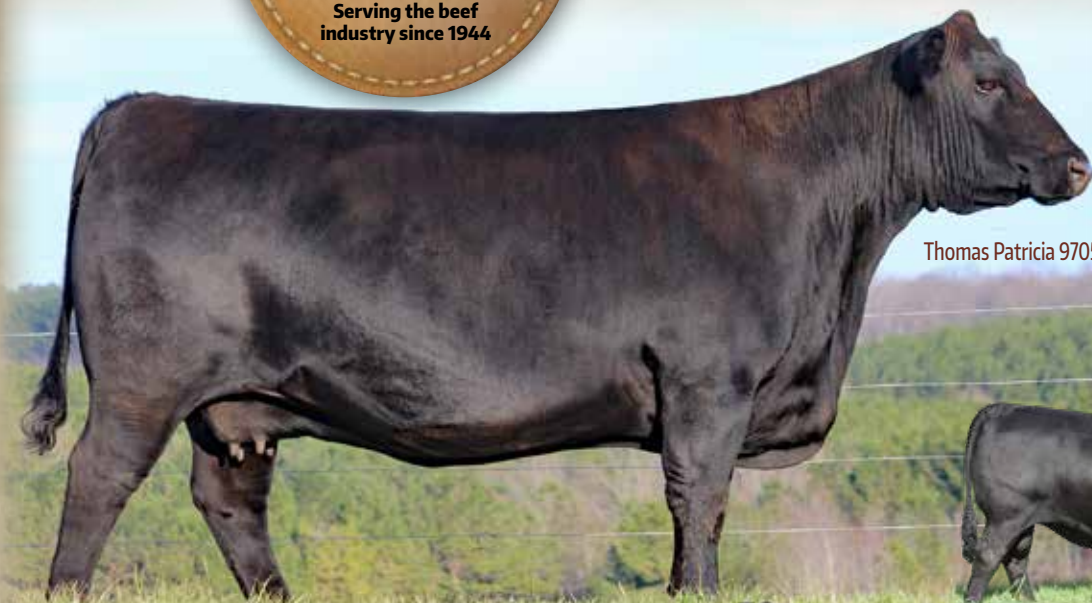


2020 ANGUS FOUNDATION HEIFER PACKAGE

Donated by:



Angus
Foundation
EDUCATION • YOUTH • RESEARCH



Thomas Patricia 9705



KCF Bennett
Summation

BUYER'S CHOICE OF THREE ET HEIFER CALVES DUE SEPTEMBER 25, 2019

These three are the total of heifer calves due this Fall from the mating of Thomas Patricia 9705 to KCF Bennett Consent Y75. Full siblings to these heifers include KCF Bennett Summation (Katie-Colin Farms and Quaker Hill Farms), KCF Bennett Assent (Alta Genetics) and KCF Bennett Citation (44 Farms). Maternal siblings to these heifers include KCF Bennett Fortress (Select Sires), KCF Bennett Immense (Semex) and KCF Bennett Optimizer (Connealy Angus).



KCF Bennett
Fortress



KCF Bennett
Citation



Our family is honored and humbled by the opportunity to participate as donor of the 2020 Angus Foundation Female.

— Paul Bennett

For more information contact:

Angus
Foundation
EDUCATION • YOUTH • RESEARCH

Rod Schoenbine
Director of Development
330.464.9793
rschoenbine@angus.com